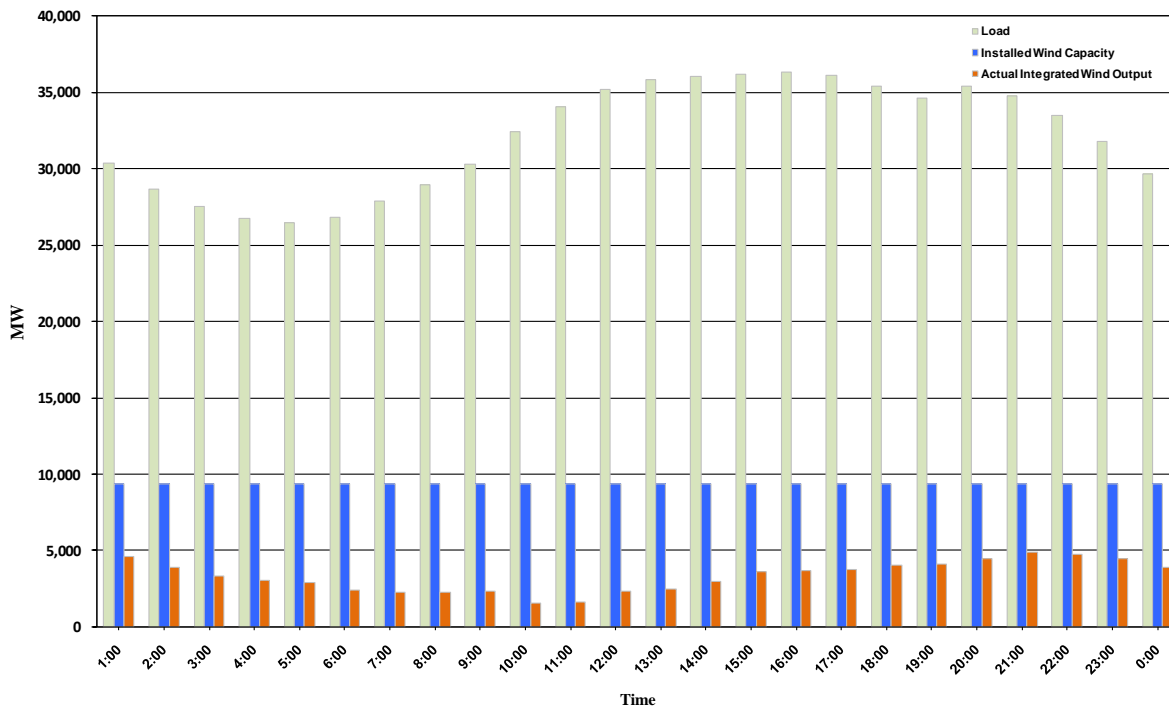




ERCOT Grid Operations Wind Integration Report: 10/23/10

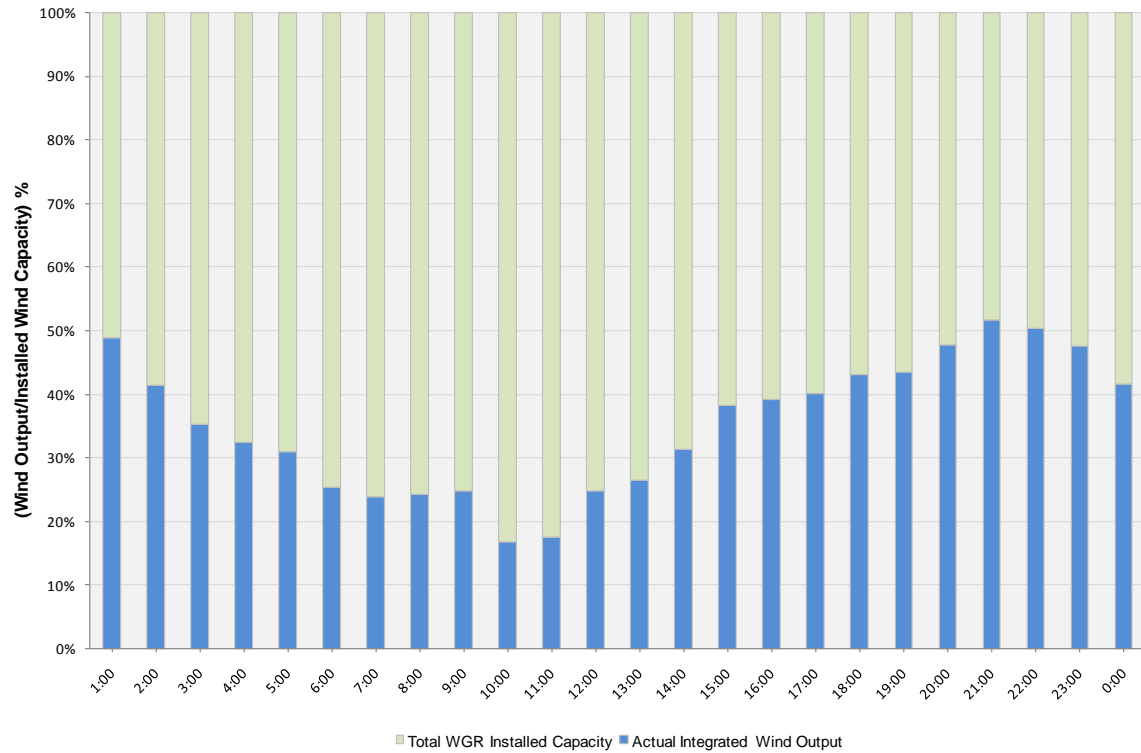
Peak Load	36,322 MW
Load Peak Hour	16
Wind Record 06/12/10	7016 MW
Max Wind value	4960 MW
Wind Peak Hour	20:48:12
Wind Integration %	14.41

Hourly Average Actual Load vs. Actual Wind Output
10-23-2010

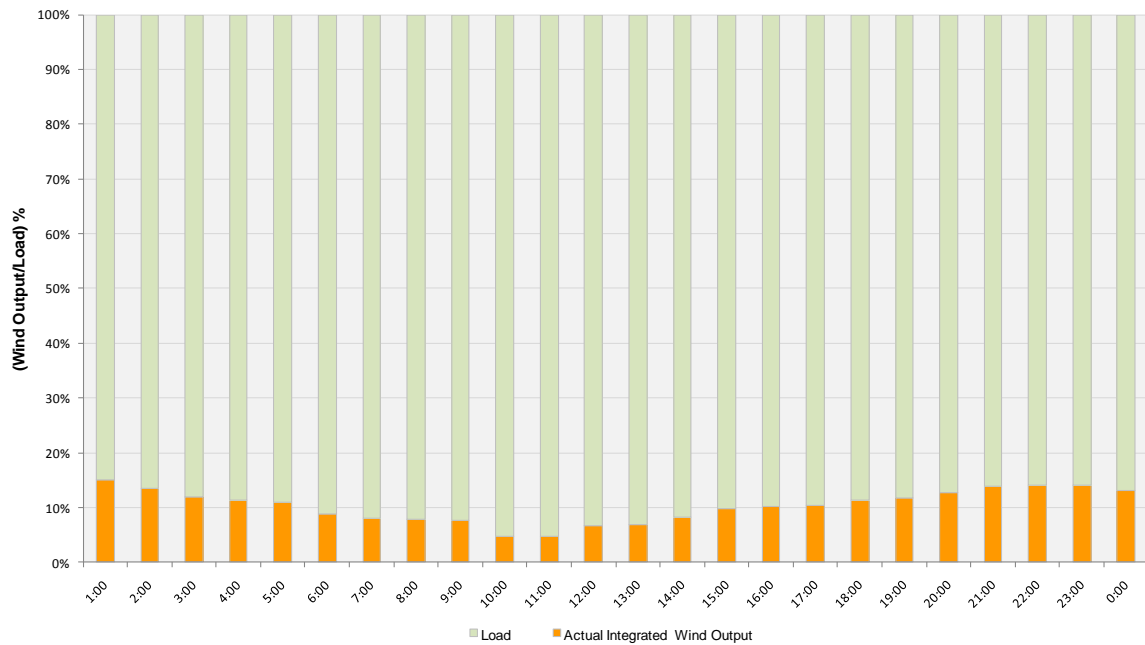




Actual Wind Output as a Percentage of the Total Installed Wind Capacity
10-23-2010



Actual Wind Output as a Percentage of the ERCOT Load
10-23-2010





ERCOT Load vs. Actual Wind Output 10/16/10 - 10/23/10

